

THE
POWER OF
Endowments
TO SHAPE
THE FUTURE
2020 ANNUAL REPORT



PASADENA
COMMUNITY
FOUNDATION

LEADERSHIP LAUNCHES 2021 WITH A NEW VISION

MARGARET MGRUBLIAN

PCF BOARD OF DIRECTORS CHAIR

As we reflect on 2020's accomplishments and move on to 2021 priorities, I am reminded that Pasadena Community Foundation's unique role is to support our community through the Power of Endowments.

"Our efforts in 2020 helped lay important groundwork for innovative initiatives. 2021 gives us the opportunity to build on them."

— Margaret Mgrublian

experience over the last year has shown us how the hardships of the pandemic also offered opportunity for reimagination and vision.

Innovation and forward thinking require our community's financial support, and in these pages, we focus on the Power of Endowments in shaping Pasadena's future.

PCF crafted a broad COVID-19 disaster response plan and targeted emergency funds to organizations across the city. Donations to our COVID-19 response funds supplemented our endowment payouts. We are incredibly proud that \$2.6 million in PCF grants helped these organizations adapt services, build capacity, and serve vulnerable neighbors.

We begin 2021 with a sense of energy, hope, and purpose, as well as a renewed appreciation for the importance of endowments to our work. Our collective



LES STOCKER

CHAIR, PCF STRATEGIC PLANNING COMMITTEE



Informed by 2020's unprecedented experience and strengthened by the significant growth of the Foundation in recent years, PCF launched a strategic planning effort at

the end of 2020. Having exceeded our previous goals, PCF is looking ahead to how we might continue to serve our community with more impact, collaboration, and equity. We hope to draw from the generosity and diversity of our community to fund broadly and thoughtfully in all of PCF's areas of interest. These areas of interest are funded by endowments created by people who are investing in Pasadena's future.

SONIA SINGLA

CHAIR, DEI TASK FORCE



The events of 2020 made clear that racial equity must be centered in our work moving forward. To that end, the Foundation has prioritized an important goal for 2021: the creation of a

Racial Equity Initiative. I am so honored to chair the newly formed Diversity, Equity, and Inclusion (DEI) Task Force, which will guide the initiative efforts and comprises Pasadena-area community leaders who are deeply invested in the issue. The Task Force will ultimately recommend how to allocate PCF grant funds during this calendar year and beyond. 2021 will be the year we elevate equal representation, fairness, and a sense of belonging into all threads of our work.

NEW BOARD MEMBERS



KOKO ARCHIBONG is the Vice President and Private Wealth Advisor at Capital Group Private Client Services, one of the world's oldest and largest investment management organizations. He started there in 2015 as Senior Client Relationship Associate, and since 2018, he has served in his current role. A Pasadena native, Koko enjoys spending time with his wife, a psychiatric nurse at Huntington Hospital, and his young son, a student at Poly.



SCOTT NESBIT is the retired CEO of Rockpoint Land, a captive residential land development subsidiary of Rockpoint Group. Scott became interested in PCF after seeing firsthand its assistance to Cancer Support Community, where he served as a board member. Scott has also served as the Director of the LA County Fire Department First Responders' College Fund, a Trustee of the San Marino School Foundation, and on the boards of

the San Marino Little League and Boy Scout Troop #355. He and his wife Julie live in La Cañada and are parents to five grown children.



UMA SHRIVASTAVA is a retired Bank of America Senior Vice President – her professional banking career extended over 25 years. She is also a celebrated and award-winning entrepreneur and an active participant in the nonprofit sector, serving leadership positions with Women at Work, USC Medical Faculty and Friends Association, and La Cañada Flintridge Chamber of Commerce. She was born in India and has lived in the Pasadena area since 1989 with

her husband, Dr. Prakash Shrivastava. They are the proud parents of three children and grandparents of six.



ARMINEH TAVITIAN, M.D., began her career in private practice as an OB/GYN, before working as Medical Director at Comprehensive Community Health Centers. Currently she is a Senior Advisor at Greg Facktor Associates, a healthcare consulting firm. She has served as a volunteer with Reading Partners, a member of the Grant Screening Committee of the Everychild Foundation, and on the Board of Trustees at Westridge School for Girls. She and her husband Ara live in

La Cañada and are parents to two young-adult daughters.



GRETA JOHNSON MANDELL, M.D., is a retired psychiatrist with a long career in inpatient and outpatient psychiatric evaluation, as well as holistic care and pain management. Greta also earned a Certification in Fashion Merchandising and Marketing, Fashion Institute of Design & Merchandising (FIDM) in 1987 and integrated that field into her medical research. Her philanthropic leadership in the Pasadena area includes roles with Pasadena Playhouse,

Theatre at Boston Court, and Pasadena Symphony, POPS, and Youth Orchestras; she is also the founder and director of the Compton Arts Council. Greta lives in Altadena with her husband, Peter Mandell.

2020 BOARD OF DIRECTORS

Margaret Mgrublian,
Chair

Koko Archibong

David Beringer

Bill Bogaard

Scott Christopher

Phyllis Crandon

Sandra Ell

Priscilla Gamb

Jenny Lim

Greta Johnson
Mandell, M.D.

J. Scott Nesbit

Gloria Pitzer

Nicholas Rodriguez

Margaret Sabbag

Uma Shrivastava

Sonia Singla

Les Stocker

Armineh Tavitian, M.D.

Michelle Tyson, M.D.

Alex Wei

2021 PAST BOARD ADVISORY COUNCIL

Ann Barrett

Bob Carlson

Ray Cortines

Dave Davis

R-lene de Lang

Rita Diaz

Raymond Ealy

Judy Gain

James D. Gamb

Peter McAniff

Lois Matthews

G. Arnold Mulder

Wendy Munger

Eddie Newman

Diane Scott

Fran Scoble

Joel Sheldon

David Werbelow

2021 PROFESSIONAL ADVISORS COMMITTEE

Ryan Dietz

Alison Gamble

Kathleen Gilmore

Elaine Gregory

Hans Gustafsson

Bill Hranchak

Kelley Bannon

Lashley

Karl Swaidan

Vanessa Terzian

PCF STAFF

Jennifer DeVoll
PRESIDENT/CEO

Mariver Copeland
CHIEF FINANCIAL
OFFICER

Kate Clavijo
PROGRAM
DIRECTOR

Mike deHilster
PROGRAM OFFICER

Sarah Hilbert
MARKETING &
COMMUNICATIONS
MANAGER

Jennifer Clark
DONOR RELATIONS
ASSOCIATE

Ai-Hsien
"Allie" Carreon
ADMINISTRATIVE
ASSOCIATE

2021 PLANS & PRIORITIES

In 2020, more than half of PCF’s grantmaking funds came from endowments for the local community, and in 2021, endowments will continue to provide a vital foundation for several new initiatives, outlined here. We enter the new year with hope and a commitment to staying flexible and responsive.

Ongoing COVID-19 Relief

PCF continues to strengthen our community’s pandemic response by supporting nonprofit organizations that are providing critical relief and recovery services. Priorities will focus on vulnerable populations and include efforts to support childcare for essential workers, mental health-related services, and to continue partnering with the city to keep Pasadena-area small businesses open with targeted grants.



Photo: Stephen Higginbotham

Equitable Vaccine Distribution

As part of the Foundation’s ongoing response to the pandemic, PCF is exploring collaboration with the Pasadena Public Health Department and other partners to get the COVID-19 vaccine to populations that face barriers to access such as technology, transportation, or lack of information. PCF is looking to build capacity in community partners who reach the underserved so that as the vaccine becomes more widely available, these local nonprofits can escalate outreach and numbers served.

Racial Equity Initiative

Guided by the newly formed Diversity, Equity, and Inclusion (DEI) Task Force, pictured at right, PCF’s Racial Equity Initiative has a two-fold commitment in 2021: providing \$100,000 in funding; and integrating the concepts of DEI into all aspects of the Foundation’s work.



PCF Animal Grants Program

PCF received a bequest to create the Garfield Gilbert Family Endowment for Animals, a permanent fund that will award annual grants to support animal charities welfare. In 2021 PCF’s new Animal Grants Program Task Force will award \$27,000 for domestic animal care and protection of wildlife.

EDUCATION ENDOWMENT BUILDERS FUND PCF SCHOLARS

Funds generated from PCF’s 14 Education Endowment Builders have allowed the Foundation to commit \$1 million over eight years to PCF Scholars, which supports low-income students at Pasadena City College, all graduates of PUSD high schools. Since 2019, the power of endowments has shaped the futures of 18 deserving scholars and will continue to support our goal of funding 35 scholars annually.

ANGELA ROMERO

Pursuing a Career in Nursing
4.0 GPA | 20 Units Completed

Angela is one of seven children in a very loving and supportive household. As she described in her application, “Growing up, my more affluent friends may have had the most high-tech electronics, the most expensive extracurricular activities, and tutoring, but I have the most loving and emotionally supportive family that anyone could ever wish for. This is part of the driving force behind my determination to fulfill my lifelong dream and career goal of becoming a nurse. My parents always have stressed to us the necessity to get a college education and a fulfilling career so that we will never struggle the way they have. I hope to someday be in the financial position to provide for my parents so that they will never have to worry about money troubles again.” Angela is working very hard to maintain a high GPA in order to be accepted into PCC’s highly acclaimed nursing program.



USE OF PCF FUNDS: \$1,000 New Laptop • \$500 Persistence Award
• \$500 Bookstore Voucher



KEVIN MORALES

**Planning on transferring to a
Cal State Campus in Fall, 2021**
3.68 GPA | 38 Units Completed

Kevin is a Pasadena Unified School District graduate from Marshall Fundamental High School. Kevin chose to attend PCC because of his family’s lack of financial stability: His father was injured and cannot work, and Kevin’s mother supports the family on minimum wage. His family works hard to support each other and Kevin says they developed

“thick skin, mental strength, and a drive to succeed.” Kevin wants to attend college to provide a more stable financial future for his family. He has taken his opportunity at PCC very seriously, attending classes over summer and winter sessions. He used to work as a server on the weekends at the University Club with his brother, which spurred his interest in pursuing a career in hospitality.

USE OF PCF FUNDS: \$300 Academic Support, One-on-One Tutoring for Accounting and Statistics • \$500 Persistence Award • \$500 Bookstore Voucher

ROBERT JOHN FLOE ENDOWMENT

A BEQUEST FOR THE FUTURE

A longtime supporter of PCF and local charitable organizations, Robert “Rob” Floe is the president and founder of Floe Financial Partners, a Pasadena investment advisory firm.

Rob recently created a bequest with the help of his attorney Karla Berentsen. He named PCF as the beneficiary of his retirement funds to create the



“All I had to do was change the beneficiary to make 100% of my retirement funds go to doing something good in the world.”

— Rob Floe

Robert John Floe Endowment, and its charitable intent is unique: Each year, 4% of the endowment balance will be used for one “high-impact” grant award, supporting a single nonprofit in the five areas of interest that are important to Rob. The grants will cycle through his areas of interest every five years.

Rob liked that using IRAs was easy and efficient. “All I had to do was change the beneficiary to make 100% of my retirement funds go to doing something good in the world.” Rob also liked the idea of being forever part of one of his favorite

events in Pasadena: PCF’s Local Heroes Breakfast. “It’s one of the most positive events of the year in our community and thinking of my money being given away there makes me so happy.” The “high impact” idea emanated from Rob’s board roles. “Organizations always have projects on their ‘to do’ lists but never quite have enough resources to get them done. A larger gift gives them permission to be innovative and accomplish important goals with it.”

KARLA BERENTSEN, the Chair of Hahn & Hahn’s Trust and Estates Practice Group, handles complex estate planning and serves as Rob Floe’s estate attorney. She sees huge value in choosing charities as the beneficiaries of retirement assets upon death, as Rob has. It is an easy process, no fees are incurred to make the changes, and it offers a win-win solution to a 2020 tax law that imposes harsher tax consequences on non-spouse beneficiaries (such as children and grandchildren) who inherit a retirement account. It’s also a feel-good option: “I see that when charity is involved, there’s a feeling of ‘Wow, I am going to do something important with my money, I am creating a lasting legacy.’”

Karla loves connecting her clients to Pasadena Community Foundation. “PCF is so educated about all the local charitable organizations. That deep knowledge helps clients narrow their focus and feel like they are getting a vetted understanding of nonprofits and how their money will be used.” Karla notes that PCF’s personal touch is always evident. “PCF spends careful time with clients to make their goals happen, spending time understanding their goals and integrating them carefully into the Memorandum of Charitable Intent. In turn, my clients feel strongly that ‘PCF is going to do right by me.’”



Rob chose five fields of interests to receive his high-impact grants, all areas to which he is personally connected. “I think it’s important for all of us who value giving to the community during our lives to also ensure giving after we’re gone. It’s a way for our values and goals in life to continue after death.”

Year #1, Year #6, etc.
HOMELESSNESS

Rob served on the Union Station Homeless Services Board of Directors and was a longtime donor to the organization.

Year #2, Year #7, etc.
ABUSED CHILDREN

Rob served on the board of Five Acres and learned the importance of helping young people who experience early trauma.

Year #3, Year #8, etc.
LGBTQ YOUTH

As a gay man, Rob wants to support young people who face adversity because of their sexual orientation or non-confirming gender roles.

Year #4, Year #9, etc.
ARTS & CULTURE

Rob is a singer and believes that exposure to the arts has been an important component to his rich and well-rounded life.

Year #5, Year #10, etc.
INTERNATIONAL DEVELOPMENT

Rob was actively involved with the Heifer Project and believes in Heifer’s philosophy of helping people help themselves to build sustainable lives.

LEGACY SOCIETY

Future Funds of the Pasadena Community Foundation

We recognize and honor these generous donors who have made provisions in their estate plans for future gifts to the Pasadena Community Foundation.

Anonymous (9)	Glenn Gruber	Sterling Pile
Christle Balvin	Arlene Harder	Donald & Gloria Pitzer
Ann Dobson Barrett	Frederick R. Harris OD	John & Charlotte Reith
Geoffrey Baum & Lisa Gallaway	Thomas Harris	Johnny N. Rogers
Barbara Beckham	John J. Kennedy	Gail Rolf
Karen Bizzini	Scott & Debi Kroman	David Ross
Bill & Claire Bogaard	Linda Lasley	Annette Serrurier
Orin Burgess	Celia Lemon	Sandra Shatto
Patricia Cole	Bill & Patti Loitz	Christine Sisley
Carl W. & Lynn Cooper	Denise Mamishian	Peggy Smith
Gilbert & Rebecca Corrales	Sati Ram Manvi Trust	Leslie Jr. & Pamela Stocker
Ruth Creary	Gwendolyn & Michael Marino	Thorpe Family Trust
John & Ginny Cushman	Ann Martinez	Betsey Tyler
Matthew & Jennifer DeVoll	John & Margaret McAustin	Virginia Uribe Trust
Raymond & Charmayne Ealy	James McDermott Jr. & Cynthia Kurtz	Jolly Urner
Kimberly A. Ebner	Donald & Nancy McIntyre	Todd Van Donge
Robert Floe	R-lene Mijares de Lang	Lee Wallace
Judith Gain	Roger & Gloria Mullendore	Mary Weaver
	Richard Nordin	Randolph & Judith Wilson

THE POWER OF *Endowments*

A PERMANENT AND EVER-INCREASING
SOURCE OF FINANCIAL SUPPORT TO
SHAPE THE FUTURE

ARMINEH & ARA TAVITIAN PAY IT FORWARD

Armineh and Ara Tavitian are among the newest Endowment Builders at Pasadena Community Foundation, where Armineh was recently seated on the Board of Directors. The couple met at University of Southern California Keck School of Medicine in 1991. Ara is a practicing physician in gastroenterology, while Armineh, after spending many years as an OB/GYN, now works in community health services. The couple has been married for 26 years and are the parents of two young-adult daughters.



The couple's early lives set the stage for their strong commitment to education and their belief in giving back to their community. Each were immigrants at a young age: Armineh was born in Iran, and Ara was born in Lebanon. Both are very proud of their shared Armenian heritage.

Armineh and Ara are first-generation college graduates, and Armineh notes that each family worked exceptionally hard to create that opportunity for their children. Both families made the decision to move to a new country for better educational opportunities: Armineh's father moved his family to France, where Armineh finished high school, and Ara's mother, following his father's death, relocated the family to

New Jersey. She worked two jobs and ultimately was able to see all four children graduate from college; three proceeded to earn graduate degrees. Armineh arrived in the United States as a young adult to pursue her higher education.

Armineh reflects on her upbringing and stresses the importance of "paying it forward" to future generations. She also appreciates that creating an endowment at their relatively young age allows them to experience and appreciate its growth and fruition. "For us, it's important to see the impact and to watch the investment grow and support the community. An endowment

allows you to assist people even when you cannot foresee what that upcoming need might be when you initiate your endowment. It gives us a level of assurance that our support for the community will have very tangible, impactful results going forward and that we'll be here to see that."

"It's important to recognize that when someone has supported you in some way, it's up to you to make it better for the next person. For us, we want to support the next generations and to highlight that education and access to basic health care are two paths out of poverty."

— Armineh Tavitian

Endowment Builders are donors who have established named endowment funds that support PCF’s grantmaking programs, making it possible for PCF to award more than \$1 million in local grants each year and provide sustained support for more than 100 local nonprofit organizations. They are the cornerstone of our mission to build hometown legacies for Pasadena.

ARTS & CULTURE

- Anonymous Arts Endowment
- Ann Dobson Barrett & Olin Barrett Endowment for Arts & Culture
- Jim & Joan Caillouette Endowment for the Arts
- Margaret Leong Checca Endowment for the Arts
- Phyllis & David Crandon Endowment for Arts & Culture
- David & Holly Davis Arts & Culture Endowment
- Alan M. & Sheila R. Lamson Endowment for Arts Education
- Live Orchestral Music Endowment

ENVIRONMENT & ANIMAL WELFARE

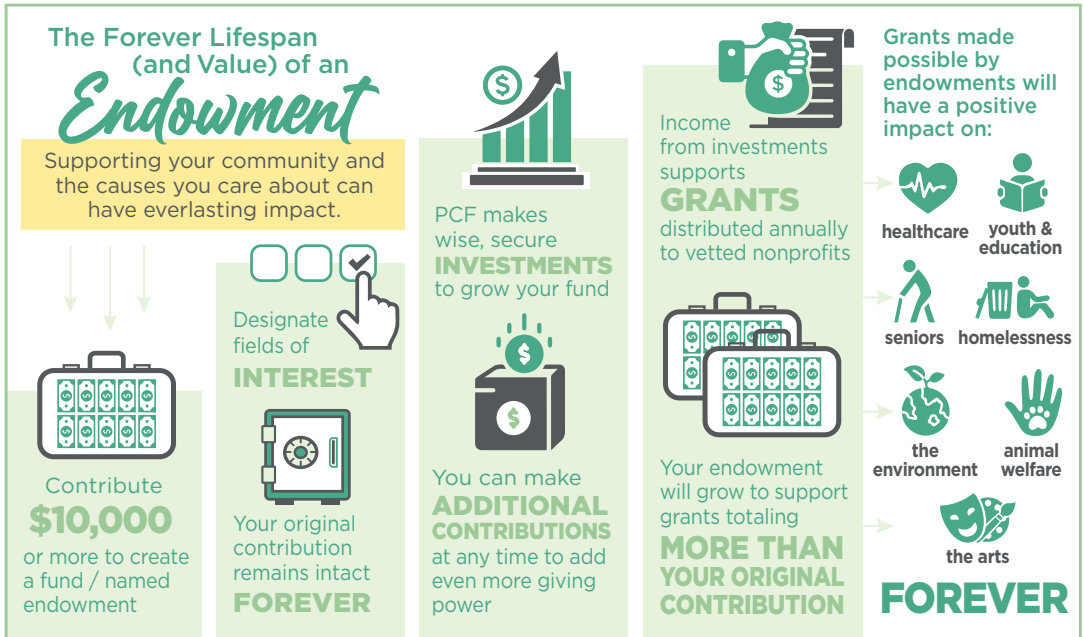
- Matthew & Jennifer DeVoll Endowment for the Environment
- Garfield Gilbert Family Endowment
- Christopher & Virginia Orndorff Endowment for the Environment

EDUCATION & YOUTH

- Anonymous Education Endowment
- Rebecca R. Anthony Endowment for Needy & Underprivileged Youth
- Clifford Swan Investment Counselors Education Endowment
- Carl & Lynn Cooper Endowment

- Luke & Allyson Copeland Endowment for Education
- Fedde Endowment for Disabled Youth
- Fitzberg Foundation Endowment
- Clarence E. Fleming Memorial Endowment
- Brenda & Bill Galloway Education Endowment
- Garfield Gilbert Family Endowment
- Loretta Glickman Endowment for African American Youth
- Hancock & Julia Banning Endowment for K-12 Education
- Marvel B. Kirby Endowment
- William K. Lewis Endowment
- Fred & Jenny Lim Education Endowment
- Stephen & Judith McDonald Endowment for Education
- Mielke Endowment
- Mitzvah Endowment
- Ray & Eddie Newman Endowment for Education
- Michael R. Peevey & Carol J. Liu Endowment for Education
- Glenn & Carol Pomerantz Endowment for Education
- Ella C. Price Endowment for Disabled Children
- Jud & Marilyn Roberts Endowment Fund for Education
- Lonnie & Lorraine Schield Endowment
- The Scoble Family Endowment
- Janet Wood Endowment
- Yes Virginia Endowment

Continued...



HEALTH & SAFETY

John & Lucille Crumb Medical Research Endowment
Jim & Priscilla Gamb Endowment for Healthcare
Phillip & Lois Matthews Endowment for Health
Marjory E. & Harold B. Reichert Endowment for Health

HUMAN SERVICES

Nancy Nash Beckham Endowment for Hunger
Mel & Renate Cohen Endowment for the Homeless
Helen & John Deverell Endowment
Cornelia L. Eaton Endowment for Assistance
to the Elderly
Roger & Gloria Villalobos Mullendore Endowment
Fund for Hunger
Bill & Betsy Rawn Endowment for Seniors in Need
Mark Rice & Diana Schulz Endowment
Truman's Touch Endowment
Peter & Jeannie Vaughn Endowment
Vista Nova Renaissance Endowment

INTRODUCING:

COMMUNITY & ECONOMIC DEVELOPMENT

MULTIPLE AREAS OF INTEREST

A Rainy Day Endowment
William J. & Claire W. Bogaard Endowment
Bill & Patti Loitz Edowment

UNRESTRICTED

Margaret L. Amos Endowment
Anonymous Endowment
Dorothy Avakian Endowment
Guil & Gwen Babcock Endowment
Joseph W. Barta Endowment
Bailey & Barbara Bishop Endowment
David and Judy Brown Endowment
Rena J. Bruce Endowment
Elizabeth Brown Calleton Endowment
Bob & Maureen Carlson Endowment
Clark Foundation Endowment
O.K. Earl Endowment
Kimberly Ebner Endowment
Eleven Twenty Seven Endowment Fund, Temo Arjani
Fred & Jean Felberg Endowment
Fornaciari Family Endowment
Stephanie Fox Endowment
Richard & Mary Alice Frank Endowment
Judith Gain Endowment
James Gamble Endowment
Hall Family Endowment Fund for the Community
Bob & Arlene Harder Endowment
Headley Family Endowment
Hal & Marguerite Hennacy Endowment
Betty Jean Ho Endowment

Jean Hubbard Endowment
Roger & Candis Ipswitch Endowment
Bryan & Debi Jacobs Endowment
George & Maggie Jagels Family Endowment
Bernard & Mary Johnson Endowment
John & Jennith Knox Family Endowment
Virginia Krueger Endowment
Elizabeth Lent Endowment
Helen B. Lockett Endowment
Al & Rose Marie Lowe Endowment
Ruth Stewart Martin Endowment
Katherine Mason Endowment
McAniff Family Endowment
David & Margaret Mgrublian Endowment
Loren G. Millis Endowment
G. Arnold & Gretl Mulder Endowment
Wendy Munger & Leonard Gumpport Endowment
Dottie & Byron Nelson Endowment
Maria Antonia Niven Endowment
Nix-Stahl Family Endowment
Ralph M. & Margaret K. Norrington Youth Endowment
Opel Family Endowment
Peggy Phelps Endowment
Dorothy J. Philips Endowment
Sterling Pile Endowment
Pitzer Family Endowment
William J. Prisk Endowment
Reith Endowment
William T. Reynolds Endowment
Vicky & David Rogers Endowment
Cynthia P. Rosedale Endowment
Lucille R. Roseman Endowment
San Pasqual Trust Endowment
Schneickert-Otamura Endowment
Nan & Howard Schow Endowment
John Schug Memorial Endowment
Judith Score Endowment
H. Diane Scott Endowment
John & Linda Seiter Endowment
Sara Brady Shatford Endowment
Joel & Jil Sheldon Endowment
Sonia & Neil Singla Enowment
Dorothy I. Stewart Endowment
Philip A. Swan Endowment
Philip V. & Sara Lee Swan Endowment
Ara & Armineh Tavitian Endowment
John & Shirley Thomas Endowment
Thorpe Family Trust Endowment
Maria & Terry Tornek Endowment Fund
Sid & Betsey Tyler Endowment
Tyson & Hagopian Family Endowment
Louis & Marion Webb Endowment
John & Judy Whiting Endowment
Helen Wilfong Endowment
Randolph & Judith Wilson Endowment

SINGLAS HONOR PARENTS' IMMIGRANT VALUES WITH AN ENDOWMENT FOR PASADENA

Sonia and Neil Singla are long-time Pasadena residents with Midwestern roots and a strong sense of community. Sonia is a physician and scientist whose work focuses on the treatment of pain. Neil is the Chief Scientific Officer of Lotus Clinical Research, which he co-founded in 2001 with Sonia; she serves as the Medical Director. They are parents to three children.

The couple supports numerous nonprofit organizations and initiatives, with health care and education topping their passions. Sonia serves on PCF's Board of Directors, where she has experienced the impact of endowments. The couple created the Sonia and Neil Singla Endowment in December 2020, as Sonia says, because "it offered the chance to make a difference in perpetuity. An organization can only be as nimble as its endowment – and PCF's endowments have really helped it respond to current needs."



Embracing Family History and Community

Sonia and Neil are both children of immigrants – each family is from India – and the couple credits their parents for instilling in them the fundamental values to achieve the American Dream: hard work, education, and civic engagement. Sonia's father served in the Indian Army for over 15 years before emigrating, initially to Canada, where Sonia was born. The family soon settled in Cleveland, Ohio, where Sonia and her two siblings were raised and enjoyed a quintessential middle-class life. Sonia reminisces that her father, who worked for 40 years at the Ford Motor Co., never said no to overtime, valued all things American, and managed to send three kids to parochial school and then off to college without debt, with help from her mother, who worked as a nurse.

Neil likewise benefited from his parents' determination to use their skills in their new country. Neil's mother was the first female in her medical school in India and became an OB/GYN there. After the family emigrated to Dayton, Ohio, she wanted to start a family, so she picked the field of pathology knowing that there was little night call. After her children were in high school, she opened her own family medicine clinic and served her neighborhood community for 20 years.

Sonia has spent time thinking about her parents and the ways in which their assimilation, hard work, and an ethos that embraced both community and nation helped shape who she is as an adult. "I always understood how hard they worked, but maybe didn't appreciate it until I had my own kids. I recognize now that my path, my successes, and my community work were paved by their efforts: It's a strong sense of 'pay it forward.' I think about how we as children of immigrant parents feel, in our every waking breath, a debt of gratitude for their sacrifice. They give us a better life, and we spend the rest of our lives trying to realize that."

"I've seen firsthand what PCF has been able to accomplish thanks to funds from endowments, including the important work with PCF Scholars and the incredible COVID-19 response."

— Sonia Singla

FRIENDS & FELLOWS

We are pleased to recognize those donors who made a contribution to support PCF's local grantmaking in 2020. PCF's efforts were primarily focused on response to the pandemic. Donors recognized below made contributions to PCF's COVID-19 Response Fund, PCF's COVID-19 Small Business Relief Fund, PCF Scholars, Friends & Fellows Fund, and /or to Endowment Builder funds that generate ongoing funding for local nonprofits.

\$100,000+

Anonymous (2)
The Baltimore Family Fund
City of Pasadena
Fitzberg Foundation
David & Margaret Mgrublian
Wendy Munger & Leonard Gumpert
Sterling Pile
Doris Gilbert Sloan Trust

\$50,000 - \$99,999

Guilford & Gwen Babcock
Robert Wood Johnson Foundation

\$25,000 - \$49,999

Judy Gain
Lonnie & Lorraine Schield
Christine Sisley

\$10,000 - \$24,999

Anonymous (2)
The George & Sara Abdo Family Charitable Fund
Ann Peppers Foundation
Thomas Arnesen
Donald & Sally Clark
Ernest G. Herman Foundation
The Marjorie & Jerry Fruin Charitable Fund
Jim & Priscilla Gamb
Graeme & Elizabeth Gilfillan
Donald & Taylor Hall
Arlene F. Harder
Thomas Harris Family Foundation
Roger & Candis Ipswitch
Sara Shatford Layne
Ray & Eddie Newman
The Pasadena Area Respiratory Fund
Peter & Jerilyn McAniff
Ed Rounds & Callae Walcott-Rounds
Armineh & Ara Tavitian
Thorpe Family Trust
Michelle Tyson M.D.

\$5,000 - \$9,999

Anonymous (1)
Bill & Claire Bogaard
The Capital Group Companies Charitable Foundation

Scott & Allison Christopher
Clifford Swan Investment Counselors
David & Phyllis Crandon
Matthew & Jennifer DeVoll
East West Bank Foundation
Ann Hassett & Bob Niemack
Kevin & Jocelyn Kemper
Mary H. MacMichael
Richard & Mary Mader
G. Arnold & Gretl Mulder
Donald & Gloria Pitzer
Daniel Rothenberg
Neil & Sonia Singla
James & Maggi Van de Voorde
Leslie & Nancy Waite
Judy Waller
Alex & Katie Wei
Randy & Judy Wilson

\$2,500 - \$4,999

Robert & Maureen Carlson
Walter & Suzanne Cochran-Bond
Raymond & Charmayne Ealy
Edgewood Realty Partners
Andrew Esbenshade
Anne Esbenshade
Olga Eysymont
Don & Julie Fedde
Stephanie Fox
Gamble Jones Investment Counsel
Gillespie Foundation
Gary Hackney & Natalie Poole
Patti B. Healy
Bill & Judy Opel
Terry Perucca
Red Clay Consulting
The Reith Company in honor of their clients
Ken & Maggie Sabbag
San Pasqual Fiduciary Trust Company
Elisabeth S. Seitz, Esq.
Annette Serrurier
Betsey Tyler
Greg Vanni
Joseph & Alison Winter
Janet D. Wood
Henry & Margie Yost

\$1,000 - \$2,499

Anonymous (8)
Barbara Bankoff
Barbara M. Barrett
Thomas Baxter & Jennifer Kuo
Christine Benter
David P. Beringer
Spike & Debbe Booth
Brad & Claire Brian
Philippe Brieu
John & Louise Brinsley
Annie Brose & Chris Anzalone
Laura L. Bushley
Patrick & Joan F. Cathcart
Catherine "Tink" Cheney & Barry Jones
Mel & Renate Cohen
Joshua & Alicia Cooperman
Noel R. Corngold
Ramon Cortines
Rita Coulter
John & Ginny Cushman
David M. Davis



Adelante Youth Alliance, Achieving Access Together Project participants

Kate Dwyer
Eleven Twenty Seven Foundation
Sandra Ell
Sydney & Ray Feeney
David & Mitsuko Felton
Louis B. & Laura Fleming
Anne Fleming
Floe Financial Partners
Robert John Floe
Susan Frank

Haley & Anita Fromholz
 William & Brenda Galloway
 Beth Gertmenian
 GGA Architects
 Robert & Katherine Gillespie
 Fred Glienna
 Elaine Gregory
 Harrington Group
 Katherine Healy
 John & Barbara House
 John & Sally Howell
 Ifang Hsieh
 Phil & Laura Huffman
 David R. & Carole A. Jones
 Julianne Fine Foods &
 Celebrations
 Kamei Family Charitable Fund
 Judith G. Kelly
 James & Olga Kendall
 Lisa A Kenyon
 Stanley J. Kikkert
 John & Virginia Kimball
 Alan & Sheila Lamson
 Mark & Phaedra Ledbetter
 Margaret Leong
 Jenny & Fred Lim
 Frank & Claude Logan
 Greg Mansur
 Allen & Weta Mathies
 Tracy & Ken McCormick
 Stephen & Judy McDonald
 Elizabeth Medearis
 Gordon & DeEtte Mountford
 Dottie & Byron Nelson
 Scott & Julie Nesbit
 Michael A. Newkirk &
 Olivia P. Garfield
 Karen Otamura
 Tony Pang & Ying Ying Goh
 Michael Peevey & Carol Liu
 William & Patsy Pinney
 John & Charlotte Reith
 Mark Rice & Diana Schulz
 Jason & Sandy Roberts
 Nick Rodriguez & Patricia Jazmines
 Hunt Salembier & Lyn Beecher
 Judith Score
 Margaret A. Smith
 Leslie & Pamela Stocker
 Thomas & Elayne Techentin
 Charles & Geneva Thornton
 Kim T. Tran
 Todd Van Donge
 Peter & Jeannie Vaughn
 Robert & Carolyn Volk
 Wald Family
 David Werbelow & Jeannie Flint
 J. Patrick Whaley & Lynda L. Jenner
 Judy & John Whiting
 Liz & Andy Wilson



Pasadena Senior Center staff prepping home delivery meals

\$500 - \$999

Anonymous (3)
 Warren J. Arnett
 Howard & Rhoda Backer
 Richard Barkhurst & Katy Plumb
 David & Debra Beadle
 Barbara Beckham
 Nick Bernstein
 Robert & Susan Bishop
 Joan Caillouette
 Patrick & Joan F. Cathcart
 Martin & Nancy Chalifour
 Daniel & Grace Chang
 Kate & Leonardo Clavijo
 Margaret T. Cunningham
 Molly Derosa
 William F. Deverell & Jennifer Watts
 Flora Dunaian
 Mary T. Escherich
 Jeffrey Scott Fastnow
 John & Joan Favre
 Anne Fleming
 Gina Frierman-Hunt
 Nelson & Priscilla Gibbs
 Tim & Tammy Godley
 Sunil Golwala
 Charlotte & Simon Harrison
 Michael & LeAnn Healy
 Harold & Marguerite Hennacy
 Schuyler & Deborah Hollingsworth
 Ann Horton
 Kerin Huber
 Frank Huttinger
 Kathryn S. Iwata
 James & Stephanie Kambe
 Christianne & Charles Kerns
 Patricia H. Ketchum
 R. Dwight Lee
 Camilla Lorentzen
 Lorenzen & Noll CPAs
 Judith Lovely & Samuel Losh
 Gail Lovejoy
 Phillip & Lois Matthews
 John & Margaret McAustin
 Dr. Rochelle Medici
 Kris & Bob Morrish
 Roger & Gloria Mullendore

N.E.W. Fund
 Mark & Louisa Nelson
 George Newell
 Michael Ostroff & Joanne Topol
 Marion Payse
 Chris & Katie Poole
 Bill & Christy Rakow
 Herb & Diane Rankin
 Stephen Riffenburgh
 Robert & Louise Ritchie
 David & Kristin Ritterbush
 Albertina P. Romero
 Fran Scoble
 Michael & Diane Scott
 Dorothy McCay Scully
 Rary Simmons
 Dennis & Alison Slattery
 Robin K. Spear
 Gretel Stephens
 George & Annsley Strong
 The Sara Thacher Family Fund
 John B. Ulmer
 Charlotte Van Fleet
 Bart & Pam Wald
 The Walt Disney Company Foundation
 Perry W. Wilder III
 Margaret McAustin for City Council
 Warren & Kathy Wimmer
 Monica & Sebastian Zacharia

\$1 - \$499

Anonymous (21)
 Emily Adelsohn
 Nicole & Daniel Adrien
 Abraham & Mary Aghoian
 AmazonSmile
 James L. Arnone
 Robert & Nancy Asher
 Michael D. Avila
 Alexander Babcock
 Charles G. Bakaly Jr.
 Christle Balvin
 Mark Baratta
 Charles & Wilma Barnes
 Ann & Olin Barrett
 Jim Barry & Jennifer Wood
 Chrissie Rose
 Geoffrey Baum & Lisa Gallaway

FRIENDS & FELLOWS

Nick & Natalie Bazarevitsch
 Bryan & Louise Beckham
 John & Martha Bell
 The Benevity Community Impact Fund
 The Bianchi Family Foundation
 Gary & Elizabeth Birkenbeuel
 Jean D. Blackburn
 May Boeve
 Lee Bothast
 Clayton & Margaret Braatz
 Hannah G. Bradley
 Dawn Brasington
 Carol Bressler
 Rick Button & Mary Hinkley
 Clark & Janelle Byam
 Reynolds Cafferata
 Philip & Judith Callahan
 Robert & Joan Kirkland Cathcart
 Nancy Bankoff Chalifour
 Xiaoxiao Chen
 Michael & Wendy Churukian
 Johanna Clark
 Julie D. Clayton
 Wendy & Don Cobleigh
 Edwin & Charlotte Coffeen
 Donald & Natalie Cohen
 Richard & Donna Cohen
 Patricia Ann Cole
 Michael J. & Susan Connell
 Ronald & Marilyn Conzonire
 John & Bette Cooper
 Charles Crandon
 Mary Helen Crew
 Fred & Frederica Culick
 Phyllis E. Currie
 Clifford J. Daly
 Mrs. Nadine Danz
 Justin & Mary Dedeaux
 Grace DeVoll
 Donald C. Dewey
 Denise Dorgan & Richard Diephuis
 Janet Doud
 Peter Doyon
 Aaron M. Ealy
 Barbara Ealy
 Dr. & Mrs. Mark Eaton
 Travis Farver
 Kevin G. Ennis
 Mary Escherich
 Naomi M. Farley
 FDL Operating, LLC
 Caleb & Doris Finch
 Peter F. Gastaldi
 Susan & Curt Germundson
 Brian Geske
 Mary Glazer
 Thais Gomez
 Indu Gupta
 Michael Gurevitch & Lori Wynstock
 John & Anna Hallstrom
 Simon & Charlotte Harrison

Terry & Trudy Hatter
 Minoru Higa
 Arlene Rae Hogan
 Robert & Nellie Hollomand
 Patrick & Sylvia Holmes
 Marguerite Hougasian
 James & Susan House
 Karen Huante-Alexander
 Monica & Tom Hubbard
 Ming The Hung
 Josey Iannotti & Reno Yu
 Robert M. Inouye
 Marc R. Isaacson
 Karen Jacobson & Jerry Schwartz
 Stacy Healy James
 Paul C. Jennings
 Ruth Judkins
 Peter Jung
 Paul Kaufman
 Frances Kimbrough
 Gregory & Alfrida King
 Harshvardhan B. Koshti
 Barbara K. Larson
 Lauren Le Ber & Matt Volkmar
 Robert & Jane Leese
 Paul Little
 Liting Liu
 Jennifer & Eric Lorenzen
 Bradford Macneil
 Derek & Patricia Maier
 Veronica V. Maldonado
 Denise Mamishian
 Mark & Pauline Mariscal
 CIS Project
 Linda Massey
 Linda Mazur
 Edward & Jane McAniff
 David & Carlin McCarthy
 Stephen McCurry & Sandra Esserman
 James McInerney
 Mrs. Carson McKissick
 Frederick McKnight
 Joan & Patrick McLaughlin
 Anthony Mena
 Nancy Mercolino
 Richard Metzger
 Hana Mikita
 Ethel Miller
 Linda Moore
 Carmen Moreno
 Beverley Morgan-Sandoz
 Teresa Morris
 Phyllis Mueller
 Lynette Murray
 Scott C. Neisch
 Ernest Rick Neumann
 Janet Nippell
 Richard Nordin
 Matthew & Mikah O'Mara
 Denise Ortman
 Scarlett & Jim Osterling

The Page Family
 Jaanvi Parkhani
 Pasadena Private Finance, LLC
 Pasadena Private Wealth, LLC
 Benjamin & Sylvia Paz
 Bob & Lori Paz
 Ralph & Mary Elizabeth Perry
 Michael & Eileen Phillips
 John Poer
 Elizabeth Pomeroy
 Jim Potter & Michelle Huneven
 Jane Quinn
 Roseann & Edward Ramirez
 Sandra Rhoten
 Ann W. Riordan
 Tania & Michael Rizzo
 Mark D. Roberts
 Nathan Roberts
 Gail Rolf
 Janet Rose
 Marvin Rudnick & Kathryn Harris
 Martha H. Ruffman
 Marshall Rutter & Terry Knowles
 Elaine Salas
 Eve Santillan
 Gordon & Joanne Sasaki
 Norman & Carol Schmidt
 Patrick Shelton
 Martha Molly Siefert
 Mrs. Phebe J. Sievers
 Michael & Tammy Silver
 Mary T. Smeritschnig
 Social Ballstrikerz
 Fred & Cindy Soldwedel
 Barbara J. Spaulding
 David Spiro
 Claudio Stante
 Alma Stokes
 Janis L. Strout
 Lillian L. Thomas
 Daniel Tirrell
 Tomaso, DePry & Del Campo
 Helen Topp
 Terry & Maria Tornek
 Jean Toshima
 Donna H. Tucker
 Ray Turner & Sally Storch
 Peter U
 Angelina van Westbroek
 Patricia Vick
 Michele Vogt
 Andrew Vollero Jr.
 Scott & Julie Ward
 Guy Webster & Katie Crown
 Ronald & Roberta White
 Carla D. Williams
 Kevin Wong CPA, CFE
 Xin Xia
 Colonel & Mrs. Terry Young, USAF
 (Retired)
 Eileen Zimmerman

2020 FINANCIAL SUMMARY

2020 was a year of landmark growth for PCF, as the Foundation ended the year with more than \$129.5 million in assets, and acquired 21 new funds, including family foundation funds, endowments for Pasadena, and scholarships.

In the last five years, PCF's total assets have grown by more than

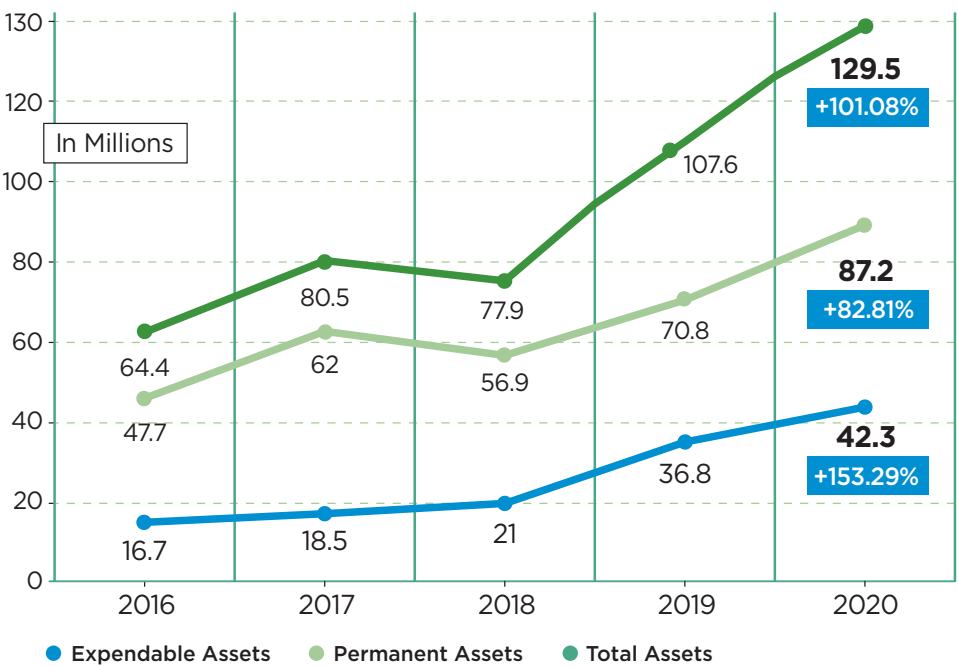
100%

STATEMENT OF FINANCIAL POSITION

ASSETS	2020*	2019
Cash and Cash Equivalents	\$1,938,041	\$1,246,377
Investments	\$127,601,305	\$106,349,992
Total Assets	\$129,539,346	\$107,596,639
LIABILITIES		
Accounts Payable	\$86,984	\$357,815
Accrued Expenses	\$186,954	\$147,954
Agency Funds	\$4,804,086	\$4,245,655
Total Liabilities	\$5,078,024	\$4,751,424
Total Net Assets	\$124,461,321	\$102,844,945
TOTAL LIABILITIES AND NET ASSETS	\$129,539,346	\$107,596,369

* PCF Financial statements are audited annually. At the time of this publication, YE 2020 is unaudited. YE 2019 is audited and copies of 2019 financial statements and tax return forms are available at www.pasadenacf.org

5 YEAR TOTAL ASSET GROWTH





PASADENA
COMMUNITY
FOUNDATION

301 East Colorado Blvd.

Suite 810

Pasadena, CA 91101

(626) 796-2097

pcfstaff@pasadenacf.org

pasadenacf.org

NON-PROFIT ORG
U.S. POSTAGE
PAID
PASADENA, CA
PERMIT NO. 671

PCF DONOR SPOTLIGHT

JACQUE FOREMAN CONROY ENDOWMENT

HONORING THE LIFE OF A DEDICATED VOLUNTEER

In 2020, Bruce Conroy, with the help of friends from the Altadena Rotary Club, created the Jacquie Foreman Conroy Endowment in honor of his wife, who had recently passed away. The designated endowment honors Jacquie's long life as a dedicated volunteer in the Altadena area and supports the Jacquie Foreman Conroy Scholarship, which is offered each year by the Rotary Club of Altadena.

Born in Appleton, Wisconsin, in 1939, Jacquie moved to California as a child and later attended UC Riverside. She and Bruce met in the late 1960s and spent more than 51 years together, much of it in their home near the Altadena foothills. Jacquie was artistic, with skills in photography and graphic design. In 1972, she started her own design company, Foreman Graphics.



Connected to Her Community

Jacquie had a giving spirit – volunteerism defined her time in Altadena. She was very involved with the Christmas Tree Lane Association (CTLA) and documented decades of the association's work with her photography. Her charitable work had the most impact, however, with the Rotary Club of Altadena, where she was a member for 25 years. She loved overseeing the Rotary's weekly SPARKS Newsletter, which she published 48 times a year. This work earned her award recognition at the Rotary District and international level more than 12 times.

PCF was a natural choice to create Jacquie's endowment. Not only will her dedication to the Rotary Club and her love of education be forever honored, but PCF's investment expertise coupled with its facility in handling donations will enable an annual distribution to Altadena Rotary Charities and ensure ongoing support for PCC students who share Jacquie's love of communication arts, graphic design, and photography. Read more about Jacquie and donate to her scholarship endowment at <https://pasadenacf.org/funds/jacquie-foreman-conroy-endowment>

