

# Here for GOOD

A stylized white logo of a person with arms raised, positioned to the right of the word 'GOOD'.

PASADENA  
COMMUNITY  
FOUNDATION

20  
22 ANNUAL REPORT



Priscilla Gamb, second from left, with PCF Director of Development Liz Algermissen (far left), and at right, Stars staff members Nancy Stiles and Amy Cardenas.

as they arise – the story on the back cover is a great example. We thank you for the role you play in sustaining our longevity and resilience in the Pasadena area.

## PRISCILLA GAMB

### PCF BOARD CHAIR

In 2023, PCF will enter its eighth decade of unwavering support for the Pasadena area. *Here for Good* is a nod to the role that PCF's endowments have played in creating perpetual support for our local grantmaking.

In 2022, PCF welcomed 15 new Endowment Builder funds, bringing our total to 162. Our Friends & Fellows donors helped us exceed our year-end fundraising goals. This support provides us the flexibility and assurance that we can meet the needs of our community

"PCF's good work grows when our generous community invests in our mission and expands our capacity to serve local nonprofits with renewable funding."

## SANDRA ELL

### INVESTMENT COMMITTEE CHAIR

The foundation's assets have decreased in response to 2022's significant financial challenges. Yet PCF is structured intentionally to be resilient in how we manage assets and deploy grants. Even in a difficult year, PCF continued to build endowments, raise funds, and make distributions for the good of our community. Our investment committee members leverage their expertise to provide regular, thoughtful oversight with an eye on the long term.

"Despite the pandemic, record rates of inflation, and a down-turn market, PCF has stayed the course regarding our investment strategies."



PCF board member and Investment Committee Chair Sandra Ell, second from right, with Vanguard Senior Investment Consultant CJ Dennis, Mariver Copeland, and Jennifer DeVoll.



Maggie Sabbag (right) with Jennifer DeVoll.

## MAGGIE SABBAG

### GRANTS COMMITTEE CHAIR

In 2023, PCF will maintain its robust grantmaking in six areas, continuing its vital support to local nonprofit organizations. PCF also serves as a platform for donors to engage in personal philanthropy through donor advised funds and scholarships. This year we embrace exciting opportunities, including the expansion of our Petersen Scholar Program for transition age foster youth, a new grant program for the arts, and renewed funding for affordable housing projects.

"In 2022, PCF's total grant distributions reached \$11M, exceeding 2021's grant total of \$8.8M."

## NEW BOARD MEMBERS



### Frank Cárdenas

Frank Cárdenas began his legal career in the Los Angeles office of O'Melveny & Myers. His solo practice focuses on the areas of business, administrative, and public law.

Frank's long record of government service has included membership on the boards of the Community Redevelopment Agency and the Public Works in the City of Los Angeles. He also served as Chief of Staff and Executive Officer for the Los Angeles County Metropolitan Transportation Authority (MTA). Subsequently, he was retained by the City of Los Angeles to manage the 2002 City Council redistricting process as

executive director. He recently completed a term on the California Fair Political Practices Commission as an appointee of Attorney General Xavier Becerra.

His community service includes positions on the boards of the Single-Room Occupancy Corporation, the California League of Conservation Voters, Big Sisters of Los Angeles, and, most recently, as board chair of the South Pasadena-San Marino YMCA.

Frank also serves as a Lecturer in the School of Business and Economics, California State University, Los Angeles. He lives in South Pasadena with his wife, Rosalina, their three children, and their dog, Amber.

### Tracy S. McCormick

Tracy S. McCormick is the Chief Financial Officer of Mill Creek Development Company in Pasadena, California, which currently has three projects under construction in the Playhouse Village.

Raised in the Midwest, Tracy began her career with J.P. Morgan in New York and worked in the firm's Chicago and Los Angeles offices. She spent 18 years with Morgan & Co., Inc. in investment banking and mergers & acquisitions, focusing primarily on the media and entertainment industries.

She serves as Lead Director on the board of MidWest One Financial Group, a community bank headquartered in Iowa City, Iowa. She is also a member of the board of directors of Folience, Inc., an ESOP-owned holding company based in Cedar Rapids, Iowa. Tracy's nonprofit work currently includes serving as co-chair of the Marketing Committee at the Huntington Library, Art Museum and Botanical Gardens.

She resides in Pasadena, California with her husband Ken and the youngest of their four children. The older three are launched in life and reside in New York, Pasadena, and San Francisco.



## BOARD

Priscilla Gamb, Chair  
Koko Archibong  
David Beringer  
Bill Bogaard  
Frank Cárdenas  
Scott Christopher  
Phyllis Crandon  
Sandra Ell  
Greta Johnson  
Mandell, M.D.  
Tracy S. McCormick  
J. Scott Nesbit  
Gloria Pitzer  
Nicholas Rodriguez  
Margaret Sabbag  
Uma Shrivastava  
Sonia Singla  
Les Stocker  
Armineh Tavitian, M.D.  
Alexander Wei

## PAST BOARD ADVISORY COUNCIL

Ann Barrett  
Bob Carlson  
Ray Cortines  
Dave Davis  
R-lene de Lang  
Rita Diaz  
Raymond Ealy  
Judy Gain  
James D. Gamb  
Peter McAniff  
Lois Matthews  
Margaret Mgrublian  
G. Arnold Mulder  
Wendy Munger  
Eddie Newman  
Fran Scoble  
Diane Scott  
Joel Sheldon  
Michelle Tyson, M.D.  
David Werbelow

## PCF STAFF

Jennifer DeVoll  
PRESIDENT & CEO

Mariver Copeland  
CHIEF FINANCIAL OFFICER

Elizabeth Algermissen  
DIRECTOR OF DEVELOPMENT

Jeannine Bogaard  
PROGRAM DIRECTOR

Ai-Hsien  
"Allie" Carreon  
PROGRAM MANAGER

Cirenia Amador  
PROGRAM ASSOCIATE

Sarah Hilbert  
MARKETING &  
COMMUNICATIONS MANAGER

Vivian Kambe  
DEVELOPMENT MANAGER

Jennifer Clark  
DONOR RELATIONS ASSOCIATE

Susana Interiano  
ADMINISTRATIVE ASSOCIATE

## PROFESSIONAL ADVISORS COMMITTEE

Alison J. Gamble  
Kathleen Gilmore  
Bill Hrachak  
Kelley Bannon Lashley  
Betty W. Ma  
Karl Swaidan  
Vanessa M. Terzian

# EMPOWERING CONFIDENCE

## PCF Education Grants Help Develop Students' Self-assurance In and Out of the Classroom

In 2022, PCF reassessed its Education Grant Program with the help of local educational experts. The refocused program centers educational equity as its priority and adds early childhood learning and school readiness as new funding areas. The first cycle awarded \$217,000 to 11 local nonprofit organizations in December 2022, including the two organizations profiled here.

Early learning and school readiness

Academic interventions in math and literacy

### EDUCATION PROGRAM FUNDING PRIORITIES

Youth development programs

College access and success

## YWCA Pasadena and Glendale

### YOUTH DEVELOPMENT

Recent studies show that girls' confidence levels plummet as they enter their teens. This fact creates real consequences for girls in school, relationships, and personal safety, notes Jomie Liu of YWCA Glendale & Pasadena (YWCAGP). Bolstering girls' confidence and validating their experiences is at the heart of YWCAGP's Girls' Empowerment Program (GEP), which Liu oversees. The YWCAGP will use its recent Education Grant to support this vital program.

YWCA Glendale and Pasadena will use its PCF Education Grant to increase program capacity at new partner sites throughout the Pasadena area.



The TechGYRLS component of GEP offers year-round coding camps, robotics workshops, and 1:1 STEAM mentorship and tutoring for girls 12-18.

GEP encompasses interconnected programs that include Girls' Circle, an afterschool support group; TechGYRLS, centered on STEAM learning; Safe Dates Violence Prevention; and Camp Rosie, an annual summer program. Broadly speaking, these component programs help ensure that girls feel empowered to express themselves, build resiliency, understand the dynamics of healthy and unhealthy relationships, and have equal opportunities in STEAM fields. Most important, GEP creates a safe environment where participants can find a sense of belonging, support, and community.

Girls' Circle, a component program of GEP, is a structured, two-hour afterschool support group offered weekly during the school year. Activities often require a level of reflection and sharing with their peers.



# African American Parent Council's Math Power Hour

## ACADEMIC INTERVENTIONS IN MATH & LITERACY

In 2019, PUSD's African American Parent Council (AAPC) debuted Math Power Hour (MPH) as a program to bolster the math skills of PUSD's Black first and second graders and to help close persistent opportunity gaps in academic achievement. Adult volunteers provide students with small group assistance during daily math instruction. MPH operates at six PUSD campuses; PCF's Education Grant will help AAPC expand the program to two more schools and serve 100 additional children.

MPH began after AAPC spent years analyzing district data of underperforming demographics and listening to students, teachers, and local education experts. "We brought everyone to the table," remembers Natasha Mahone, who recently joined PCF along with her colleague Nate Bradley for a conversation. Both are PUSD parents, leaders within AAPC, and two of the originators of MPH.

MPH is a holistic program, one that specifically focuses on building relationships between adult volunteers and students to elevate kids' assurance in the math classroom. "We found that in building these relationships, that's where we're growing their confidence and strength," Mahone notes. "When they get to third grade and take the standardized test, they can say, 'I got this!'"



Eli works on counting money with Marc Ellis. Every Black first and second grader in PUSD participates in MPH. As space allows, Latino and other students can participate.



Volunteer Marc Ellis working with MPH second graders at Norma Coombs Elementary. Reliable and consistent adult volunteers are the cornerstone of Math Power Hour. Their regular classroom assistance helps build trust with their students.



"Success in math is built around confidence, persistence, and repetition. We understand that a lot of failure in math is centered on fear. We're just looking to build our children up so that they're equipped with the emotional tools to hang in there and stick with math and science."

— Nate Bradley, PUSD parent and MPH leader

# PCF ENDOWMENT BUILDERS ARE HERE FOR GOOD

Endowments are the cornerstone of PCF's mission of building permanent assets to support its local grantmaking.

## ARTS & CULTURE

Anonymous Arts Endowment  
Ann Dobson Barrett & Olin Barrett  
Endowment for Arts & Culture  
Jim & Joan Caillouette Endowment  
for the Arts



Mel Cohen

Barbara Campbell Endowment for the Arts  
Margaret Leong Checca Endowment  
for the Arts  
Phyllis & David Crandon Endowment  
for Arts & Culture  
David & Holly Davis Arts & Culture Endowment  
Marian Hall Endowment\*  
Alan M. & Sheila R. Lamson Endowment  
for Arts Education  
Live Orchestral Music Endowment  
Sunny Stevenson Endowment for  
Arts & Culture\*

## COMMUNITY & ECONOMIC DEVELOPMENT

Shrivastava Family Endowment



Phyllis Crandon, Gloria Pitzer, and Uma Shrivastava

## ENVIRONMENT & ANIMAL WELFARE

Matthew & Jennifer DeVoll Endowment for  
the Environment  
Garfield Gilbert Family Endowment  
Christopher & Virginia Orndorff Endowment  
for the Environment  
Sisley Family Endowment for Animals

## EDUCATION & YOUTH

Anonymous Education Endowment  
Rebecca R. Anthony Endowment for Needy  
& Underprivileged Youth  
Clifford Swan Investment Counselors  
Education Endowment  
Carl & Lynn Cooper Endowment  
Luke & Allyson Copeland Endowment  
for Education  
Richard & Nancy Esbenshade Endowment\*  
Fedde Endowment for Disabled Youth  
Fitzberg Foundation Endowment  
Anne & Clarence Fleming Endowment  
Brenda & Bill Galloway Education  
Endowment  
Garfield Gilbert Family Endowment  
Loretta Glickman Endowment for African  
American Youth  
Hancock & Julia Banning Endowment  
for K-12 Education  
Marvel B. Kirby Endowment  
William K. Lewis Endowment  
Fred & Jenny Lim Education Endowment  
John Matthiessen Endowment\*  
Stephen & Judith McDonald Endowment  
for Education  
Mielke Endowment  
Mitzvah Endowment

Muriel & George Newell Endowment  
Ray & Eddie Newman Endowment  
for Education  
Ralph M. & Margaret K. Norrington  
Youth Endowment  
Michael R. Peevey & Carol J. Liu  
Endowment for Education  
Glenn & Carol Pomerantz Endowment  
for Education  
Ella C. Price Endowment for Disabled  
Children  
Jud & Marilyn Roberts Endowment Fund  
for Education  
Lonnie & Lorraine Schield Endowment  
Mark Rice & Diana Schulz Endowment  
The Scoble Family Endowment  
John Storr Endowment\*  
Jolly Urner Endowment\*  
Janet Wood Endowment  
Yes Virginia Endowment



John Storr

## HEALTH & SAFETY

John & Lucille Crumb Medical Research  
Endowment  
Cheri Ewing & Dan Asimus Endowment\*  
Jim & Priscilla Gamb Endowment  
for Healthcare  
Phillip & Lois Matthews Endowment  
for Health  
Marjory E. & Harold B. Reichert  
Endowment for Health

## HUMAN SERVICES

Nancy Nash Beckham Endowment  
for Hunger  
Wayne & Judith Carter Endowment\*

Mel & Renate Cohen Endowment for the Homeless  
 Helen & John Deverell Endowment  
 Cornelia L. Eaton Endowment for Assistance to the Elderly  
 Roger & Gloria Villalobos Mullendore Endowment Fund for Hunger  
 Pasadena Christian Church (Disciples of Christ) Endowment  
 Bill & Betsy Rawn Endowment for Seniors in Need  
 Truman's Touch Endowment  
 Peter & Jeannie Vaughn Endowment  
 Vista Nova Renaissance Endowment



H. Ross & Mary H. MacMichael

## MULTIPLE AREAS OF INTEREST

Anonymous Endowment for Youth & Education and Health & Safety  
 William J. & Claire W. Bogaard Endowment  
 Arlyne W. Husted Endowment  
 Bill & Patti Loitz Endowment  
 Nevil McInerney Endowment  
 Julie & Scott Nesbit Endowment

## UNRESTRICTED

Margaret L. Amos Endowment  
 Anonymous Endowment\*  
 Dorothy Avakian Endowment  
 Guil & Gwen Babcock Endowment  
 Joseph W. Barta Endowment  
 Bailey & Barbara Bishop Endowment  
 Rena J. Bruce Endowment  
 Elizabeth Brown Calleton Endowment  
 Bob & Maureen Carlson Endowment  
 Scott & Allison Christopher Endowment  
 Clark Foundation Endowment  
 Noel Corngold Endowment\*

Jo Drummond Endowment  
 O.K. Earl Endowment  
 Kimberly Ebner Endowment  
 Eleven Twenty Seven Endowment Fund, Temo Arjani  
 Fred & Jean Felberg Endowment  
 Fornaciari Family Endowment  
 Stephanie Fox Endowment  
 Richard & Mary Alice Frank Endowment  
 Judith Gain Endowment  
 James Gamble Endowment  
 Hall Family Endowment Fund for the Community  
 Bob & Arlene Harder Endowment  
 Headley Family Endowment  
 Hal & Marguerite Hennacy Endowment  
 Betty Jean Ho Endowment  
 Jean Hubbard Endowment  
 Roger & Candis Ipswitch Endowment  
 Bryan & Debi Jacobs Endowment  
 George & Maggie Jagels Family Endowment  
 Bernard & Mary Johnson Endowment  
 John & Jennith Knox Family Endowment  
 Virginia Krueger Endowment  
 Elizabeth Lent Endowment  
 Helen B. Lockett Endowment  
 Al & Rose Marie Lowe Endowment  
 H. Ross & Mary H. MacMichael Endowment\*  
 Sati Ram Manvi Endowment\*  
 Ruth Stewart Martin Endowment  
 Katherine Mason Endowment  
 Linda & Elliott Mazur Endowment  
 McAniff Family Endowment  
 Joan McGilvray Endowment\*  
 David & Margaret Mgrublian Endowment  
 Loren G. Millis Endowment  
 G. Arnold & Gretl Mulder Endowment  
 Wendy Munger & Leonard Gumport Endowment



Nancy & Leslie Waite



Julie & Scott Nesbit

Dottie & Byron Nelson Endowment  
 Maria Antonia Niven Endowment  
 Nix-Stahl Family Endowment  
 Opel Family Endowment  
 Peggy Phelps Endowment  
 Dorothy J. Philips Endowment  
 Sterling Pile Endowment  
 Pitzer Family Endowment  
 William J. Prisk Endowment  
 Reith Endowment  
 William T. Reynolds Endowment  
 Vicky & David Rogers Endowment  
 Cynthia P. Rosedale Endowment  
 Lucille R. Roseman Endowment  
 San Pasqual Trust Endowment  
 Schneickert-Otamura Endowment  
 Nan & Howard Schow Endowment  
 John Schug Memorial Endowment  
 Judith Score Endowment  
 H. Diane Scott Endowment  
 John & Linda Seiter Endowment  
 Sara Brady Shatford Endowment  
 Joel & Jill Sheldon Endowment  
 Rary Simmons Endowment  
 Sonia & Neil Singla Endowment  
 Dorothy I. Stewart Endowment  
 Philip A. Swan Endowment  
 Philip V. & Sara Lee Swan Endowment  
 Armineh & Ara Tavitian Endowment  
 John & Shirley Thomas Endowment  
 Thorpe Family Trust Endowment  
 Maria & Terry Tornek Endowment Fund  
 Mary Turk Endowment\*  
 Sid & Betsey Tyler Endowment  
 Tyson & Hagopian Family Endowment  
 Waite Family Endowment\*  
 Louis & Marion Webb Endowment  
 John & Judy Whiting Endowment  
 Helen Wilfong Endowment  
 Randolph & Judith Wilson Endowment

\*Endowments established in 2022

## ELLA C. PRICE ENDOWMENT FOR DISABLED CHILDREN

Ella Price died in 1941, but more than 80 years later, her commitment to children's health and wellbeing lives on as a PCF Endowment Builder Fund.

When Ms. Price created her estate plan in the 1920s, she directed that one-third of her estate be used "for help, assistance, and betterment of crippled children in the City of Pasadena." Following her death, a bank managed her trust for several decades. In 1997, the bank transferred the funds to PCF, which created the Ella C. Price Endowment for Disabled Children to honor the intentions outlined in Ms. Price's will.



The Price Endowment supported a 2020 Capital Grant to Professional Child Development Associates to improve "hybrid connections" during the pandemic.

The Ella C. Price Endowment for Disabled Children showcases how PCF works with donors to define and preserve their core values and to always honor their intent. It also illustrates how PCF is well positioned to steward funds across time to create sustainable, measurable impact in our community.



Club 21 was a beneficiary of distributions from the Price Endowment for its 2021 "Every Child a Reader" project, which helps children with Down syndrome learn to read.

### The Power of the Ella C. Price Endowment

**\$111,717**

Principle balance established at PCF in 1997

**\$138,034**

Grants made to date to 12 local nonprofits

**\$220,937**

Current fund balance

## Become a PCF Endowment Builder in THREE EASY STEPS

### 1. Pick your passion

Designate your investment to one or more of PCF's areas of interest: Arts & Culture, Community & Economic Development, Environment & Animal Welfare, Health & Safety, Human Services, and Youth & Education. Or, create an unrestricted endowment to provide flexible support for PCF's grantmaking.

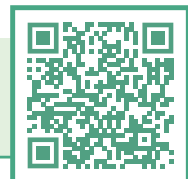
### 2. Name your Endowment

Memorialize a loved one who has passed, mark an important milestone, or create an endowment to "pay it forward."

### 3. Make your gift

Establish your fund during your lifetime or through your estate plan. It takes just \$10,000 to start an endowment with PCF (or two payments of \$5,000 over two years).

For questions about endowments or planned giving, contact:  
**Liz Algermissen • [ealgermissen@pasadenacf.org](mailto:ealgermissen@pasadenacf.org) • 626.796.2097 x10**



# THE JOLLY URNER ENDOWMENT



Dorothy Joliffe (Jolly) Urner joined PCF's Legacy Society in 2011 when she created a bequest for the children of Pasadena with the help of estate attorney Gloria Pitzer. Children were at the heart of Jolly's long career as a teacher and administrator, as well as in her community work. Her wish was to provide ongoing support for young people who are disabled, have special needs, or are enduring pediatric cancer or other debilitating illnesses. Jolly passed away in February 2022, and the Jolly Urner Endowment was established soon after.

Jolly was born in Maryland. She received her first degree at Sweet Briar College before moving to California early in her career; she earned a Master's in Education at Stanford. After teaching at several schools in San Francisco, Jolly moved to Pasadena in 1969 to accept the position of Head of the Lower School at Polytechnic School, a position she held for 30 years.

During her time at Poly, she welcomed hundreds of new faculty members with warmth and hospitality, providing them with information about the city and the school's culture. She worked with four Heads of School to further the school's commitment to service and community outreach.

After a long, rewarding career, Jolly retired and focused on giving back to her community. At All Saints Church, she continued to serve as Junior Warden of the Vestry. She served as a board member and president of Pasadena Child Health Foundation and was active in the Pasadena Art Alliance. Jolly was proud to have been a member of the founding committee of the Pasadena Library's *One City One Story* initiative.

Jolly was an avid sailor and skier; a fun-loving, competitive golfer and tennis player; and a student of the cello, sketching, and watercolors. She was happiest walking her beloved huskies and sharing her life with them.



In retirement, Jolly became very involved with the Pasadena Child Health Foundation (PCHF). She is pictured here (left) at a PCHF Open House in 2017 with PCF President & CEO, Jennifer DeVoll, and Pam Hemann.



Jolly in a Poly classroom, early 1980s.

“

“I have had several clients for whom the community foundation was a fit for their charitable goals within their estate plan or trust. The Pasadena Community Foundation is flexible and works to help my clients understand their options so that I can draft a trust document that reflects their intentions.”

— Jolly Urner's estate attorney,  
Gloria Pitzer



”

# LEGACY SOCIETY

## Future Funds of the Pasadena Community Foundation

**PCF LEGACY SOCIETY MEMBERS** are individuals who have named Pasadena Community Foundation as a beneficiary of their estate plans. The generosity of Legacy Society Members will fuel PCF's growth and impact in perpetuity.

Anonymous (11)  
Christle Balvin  
Ann Dobson Barrett  
Lisa Gallaway &  
Geoffrey Baum  
Barbara Beckham  
Karen Bizzini  
Claire & Bill Bogaard



Legacy Society Member Richard Nordin at the 2022 Local Heroes Celebration

Caroline Boles  
Orin Burgess  
Patricia Cole  
Lynn & Carl W. Cooper  
Rebecca & Gilbert Corrales  
Dr. Ruth Creary  
Ginny & John Cushman  
Jennifer & Matthew DeVoll  
Charmayne & Raymond Ealy  
Kimberly A. Ebner  
Scott Feldmann  
Robert Floe  
Judith Gain  
Glenn Gruber

Arlene Harder \*  
Frederick R. Harris OD  
Anne & Peter Kennedy  
John Kennedy \*  
Debi & Scott Kroman  
Linda Lasley  
Celia Lemon  
Patti & Bill Loitz  
Denise Mamishian  
Gwendolyn & Michael Marino  
Ann Martinez  
Margaret & John McAustin  
Cynthia Kurtz & James  
McDermott Jr.  
Nancy & Donald McIntyre  
R-lene Mijares de Lang  
Gloria & Roger Mullendore  
Richard Nordin  
Sterling Pile  
Gloria & Donald Pitzer  
Charlotte & John Reith



Legacy Society Member Rob Floe with US Congresswoman Judy Chu



Legacy Society Members Betsey Tyler and Bill Bogaard

James W. Rider  
Johnny N. Rogers  
Gail Rolf  
David Ross  
Annette Serrurier  
Sandra Shatto  
Tracy & Frank Simmons  
Christine Sisley  
Earlyn Spector  
Pamela & Leslie Stocker  
Thorpe Family Trust  
Betsey Tyler  
Virginia Uribe Trust  
Dorothy Jolliffe Urner \*  
Todd Van Donge  
Lee Wallace  
Mary Weaver  
Alison Snow & Fred Wesley  
Judith & Randolph Wilson

\* Deceased in 2022

In 2022, PCF was the beneficiary of bequests from six individuals. The following individuals have left a significant legacy with a combined total of \$2.5 million. Their endowment and scholarship funds will support PCF's grantmaking in perpetuity.

Noel Corngold • Arlene Harder • John J. Kennedy  
Marvel B. Kirby • Sati & Ram Manvi • Jolly Urner

# FRIENDS & FELLOWS

We are pleased to recognize those donors who made a contribution to support PCF's local grantmaking in 2022. Donors recognized below made contributions to PCF's Friends & Fellows Fund, PCF Scholars, and/or to Endowment Builder funds that generate ongoing funding for local nonprofits.

## \$100,000+

Anonymous  
Estate of Noel R. Corngold  
Dorothy Jolliffe Urner Trust  
Estate of Arlene Harder  
Candis & Roger Ipswitch  
Marvel Kirby Trust  
Sati Ram Manvi Trust  
Wendy Munger & Leonard L. Gumpert  
John Storr

## \$25,000 - \$99,999

Anonymous (2)  
Gwen & Guil Babcock  
Nancy Esbenshade  
Judy Gain  
Terri & Jerry Kohl  
Mary H. MacMichael  
Lorraine & Lonnie Schield  
Armineh & Ara Tavitian  
Betsey Tyler  
Judith & Randolph Wilson

## \$10,000 - \$24,999

Anonymous (2)  
The Archibong Family  
Tom Baxter  
Bill & Claire Bogaard  
The Capital Group Charitable Foundation  
Judith & Wayne Carter



Marlene Martinez and Rabbi Joshua Levine-Grater from Friends in Deed at the 2022 Local Heroes Celebration.



PCF staff & board with staff from Los Angeles Children's Chorus at a site visit.

Sally & Donald Clark  
Fitzberg Foundation  
Taylor & Don Hall  
Margaret & David Mgrublian  
Margot & Mitchell Milias  
Scott & Julie Nesbit  
Muriel & George Newell  
Sterling Pile  
Monica D. Kohler & Pedro J. Pizarro  
Earlyn Spector  
Thorpe Family Trust Fund  
Kim Totten  
Jeannie & Peter Vaughn  
Leslie & Nancy Waite  
Betty & Eddie Wang  
Katie & Alex Wei

## \$5,000 - \$9,999

Anonymous  
Dr. Cheri Ewing & Dr. Dan Asimus  
Robert E. Carlson Sr.  
Allison & Scott Christopher  
Phyllis & David Crandon  
David M. Davis  
Jennifer & Matt DeVoll  
East West Bank  
Priscilla & Jim Gamb  
Beth Gertmenian

Carolyn Horne  
Sally & John Howell  
Ifang Hsieh  
Jonathan Jaffrey  
Sara Shattford Layne  
Sonny Lulla  
Olivia Garfield & Michael Newkirk  
Judy & William Opel  
Gloria & Donald Pitzer  
Dr. Jean & James Richardson  
Sonia & Neil Singla  
Maggi & James Van de Voorde

## \$2,500 - \$4,999

Sara Campbell Abdo & George Abdo  
David Beringer  
Louise & John Brinsley  
Michelle & Andy Esbenshade  
Floe Financial Partners  
Stephanie Fox  
GGA+  
Natalie Poole & Gary Hackney  
The Harrington Group  
Merrill Lynch Wealth Management  
Gretl & G. Arnold Mulder  
Karen Otamura  
Charlotte & John Reith  
Ann Russo  
Maggie & Ken Sabbag

San Pasqual Fiduciary Trust Company  
William E. Sanson  
Uma & Prakash Shrivastava  
Wells Fargo Advisors  
Margaret & Henry Yost

### **\$1,000 - \$2,499**

Alice Huang & David Baltimore  
Ann Dobson Barrett  
Susan & Robert Bishop  
Jeannine Bogaard  
Laura Bushley  
Angus Campbell  
Margaret Leong Checca  
Barry Jones & Catherine Cheney  
Suzanne & Walter Cochran-Bond  
Mariver & Richard Copeland  
Ramon Cortines  
Tobias Delbruck  
Bonnie & John DeWitt  
Claire Panosian & Patrick Dunavan  
Eleven Twenty Seven Foundation  
Sandra Ell  
Olga Eysymontt  
Naomi Farley  
Julie & Don Fedde  
Sydney & Ray Feeney  
Mitsuko & David Felton  
Susan Frank



President & CEO of Planned Parenthood San Gabriel Valley & Pasadena Sheri Bonner with Ellen Lansden.

Lynn Fuller  
Brenda Galloway  
Robert & Katherine Gillespie  
Edith Grady  
Nellie Graham  
Patti Beckham Healy  
Deborah & Schuyler Hollingsworth  
Barbara & John House  
Arlene W. Husted Trust  
Judith G. Kelly  
Alfrida & Gregory King  
Sheila & Alan Lamson  
Claude & Frank Logan

Maggie & Carter Mack  
Mary & Richard Mader  
Greta & Peter Mandell  
Weta & Allen Mathies  
Tracy & Ken McCormick  
Judy & Stephen McDonald  
McKinley Family Foundation



Pasadena Playhouse Executive/Artistic Director Danny Feldman with Jennifer DeVoll.

Mijares Mexican Restaurant  
DeEtte & Gordon Mountford  
Gloria & Roger Mullendore  
Dottie Nelson  
Mariann & Thomas Nolan  
Christopher & Virginia Orndorff  
Diana Peterson-More  
Patricia Jazmines & Nick Rodriguez  
Callae Walcott-Rounds & Dr. Ed Rounds  
Annette Serrurier  
Peggy Smith  
Andrew Stevenson  
Leslie & Pamela Stocker  
Elayne Griffith Techentin  
Geneva & Charles Thornton  
John Ulmer  
Glenda & Greg Vanni  
Carolyn & Robert Volk  
Alison & Joseph Winter  
Monica & Sebastian Zacharia

### **\$500 - \$999**

Kate & Pat Amsbry  
Elizabeth Arnett  
Marjorie L. Barbour  
Richard Barkhurst  
Lisa Gallaway & Geoffrey Baum  
Barbara Beckham  
Christine Benter  
Carol Bressler  
Grace & Daniel Chang  
Susan & Michael J. Connell  
Christin Cooper-Taché  
Rita K. Coulter  
Rev. Margaret T. Cunningham  
Phyllis E. Currie  
Jennifer Watts & William Deverell

Richard Diephuis & Denise Dorgan  
Charmayne & Raymond Ealy  
Anita & Haley Fromholz  
Tom Gally  
Marilynn & Richard Garcia  
Margie & Paul Grossman  
Glenn Gruber



PCF Professional Advisor Betty Ma and Alice Talbot.

Marguerite & Harold Hennacy  
Marguerite Hougasian  
Saeed Jaffer  
Sally & Frank Jameson  
Christianne & Charles Kerns  
Lois & Phillip Matthews  
Linda & Paul Maurin  
Lynne Sullivan & Dennis McNamara  
Linda Gates Moore  
Kristin & Robert Morrish  
Phyllis Mueller  
N.E.W. Fund  
Louisa & Mark Nelson  
Eddie & Ray Newman  
Ryan & Jeff Newman  
Caroline & Charles Norman  
Scarlett & Jim Osterling  
Joanne Topol & Michael Ostroff  
Hillary & Blair Peterson  
Carol & Glenn Pomerantz  
Katie & Chris Poole  
Christy & Bill Rakow  
Kristin & David Ritterbush  
Lisa & Brad Roepke  
Tammy & Michael Silver  
Robin Spear  
Karen & Eric Steen  
Gretel & George Stephens  
Donald M. Stevenson  
Annsley & George Strong Jr.  
Kim Tran  
Charlotte Van Fleet  
Katherine & Guy Webster  
Katherine & Warren Wimmer  
Julianne & David Worrell  
Eileen Zimmerman

## \$1 - \$499

Anonymous (7)  
 Adrienne & Fernando Alegre  
 Liz & Steve Algermissen  
 Gordon Anderson  
 Kanela & Gerard Artavia  
 Nancy & Robert Asher  
 Michael D. Avila  
 Wilma & Charles Barnes  
 Barbara M. Barrett  
 Jennifer Barry  
 Melissa & Jared Baucom  
 Bryan Beckham  
 Lisa & Neal Begerow  
 Martha & John Bell  
 Nick Bernstein  
 Elizabeth & Gary Birkenbeuel  
 Jean Blackburn  
 Reynolds Cafferata  
 Elise & Stuart Campbell  
 Katherine Carlson  
 Joan & Patrick Cathcart  
 Nancy Bankoff Chalifour  
 Wendy & Michael Churukian  
 Jennifer & Vincent Clark  
 John Scott Clayton  
 Julie Clayton  
 Donald & Natalie Cohen  
 Teresa Colpo  
 Bette & John Cooper  
 Pattie Cotton  
 Frances & James Cutts  
 Nadine & Tony Danz  
 R. Justin & Mary Dedeaux  
 Grace Anne DeVoll  
 Kathleen Dwyer  
 Barbara Ealy  
 Virginia & James Ellis  
 Kevin Ennis  
 Doris Tsongas & Caleb Finch  
 Priscilla Flynn  
 Stacy Gamble  
 Susan & Curt Germundson



PCF board member Greta Mandell with Zach Davidson from A Noise Within.



Pat Amsbry, Mayor Victor Gordo, former Council Member Andy Wilson, and Council Member Felicia Williams at the 2022 Local Heroes Celebration.

Lori Wynstock & Michael Gurevitch  
 Larry Hall  
 Anna & John Hallstrom  
 Burks Hamner  
 Lisa & Robert Harrison  
 Trudy & Terry Hatter Jr.  
 Katherine Healy  
 Jeannette Herron  
 Lucas Hilbert  
 Francia & Dale Hines  
 Nellie & Robert Hollomand  
 Patrick & Sylvia Holmes  
 Michael Horner  
 Jean & Ann Horton  
 Marc R. Isaacson  
 Sue Jean Jahng  
 Missy & Paul Jennings  
 Carole & David Jones  
 Ruth Judkins  
 Marika Issakhanian & Hratch Karakachian  
 Linda Keller  
 Katherine Kennedy  
 Teri & Elbert Kim  
 Stan Kong  
 Frank & Joy Lavadia  
 Anne Lee  
 Kevin Michael Litwin  
 Ginger & William Loesch  
 Jennifer & Eric Lorenzen  
 Brent Lund  
 Denise Mamishian  
 Michaela Mares-Tamayo  
 Pauline & Mark Mariscal  
 Linda Massey  
 Tanya Matzen  
 Linda & Elliot Mazur  
 Jane & Edward McAniff  
 Carlin & David McCarthy  
 Steve McCarty  
 Ingrid McConnell  
 Sandra Esserman & Stephen McCurry  
 James McInerney  
 Joan & Patrick McLaughlin  
 Stacy & Stuart Miller  
 Jacqueline Montes  
 Rick Neumann  
 Ann Hassett & Robert Niemack

Richard Nordin  
 Susan & Frank Osen  
 Helen Overstreet  
 Lori & Bob Paz  
 Sylvia & Benjamin Paz  
 Mary Elizabeth Perry & Ralph B. Perry III  
 Barbara & John Poer  
 Cynthia M. & Rogelio Rabanera  
 Felicidad & Arsenio Rabanera  
 Peggy Rahn  
 Roseann & Ed Ramirez  
 Ann Ransford  
 Sandra Rhoten  
 Ann Riordan  
 Louise & Robert Ritchie  
 Tania & Michael Rizzo  
 Jan Rose  
 Kathryn Harris & Marvin Rudnick  
 Terry Knowles & Marshall Rutter  
 Ludina & El Sayed Kamel Sallam  
 Joanne & Gordon Sasaki  
 Susan Futterman & Arnold Siegel  
 Phebe & Robert Sievers  
 Alison & Dennis Slattery  
 Patricia H. Smith  
 Barbara Spaulding  
 Devin & Rick Starratt  
 Alma Stokes  
 John Taylor  
 Lee Taylor  
 Maria & Terry Tornek  
 Virginia Uribe  
 Patricia Vick  
 Michele Vogt  
 Andy Vollero  
 Anne Ely Wain  
 Julie & Scott Ward  
 Jens Weiden  
 Katherine S Weltner  
 Lynnete West  
 Roberta & Ron White  
 Sally & Russell White  
 Susan Wilson  
 William & Susan Wofford  
 Isaac & Deborah Youngstrom  
 Josey Iannotti & Reno Yu  
 Marilyn & Joseph Zeronian

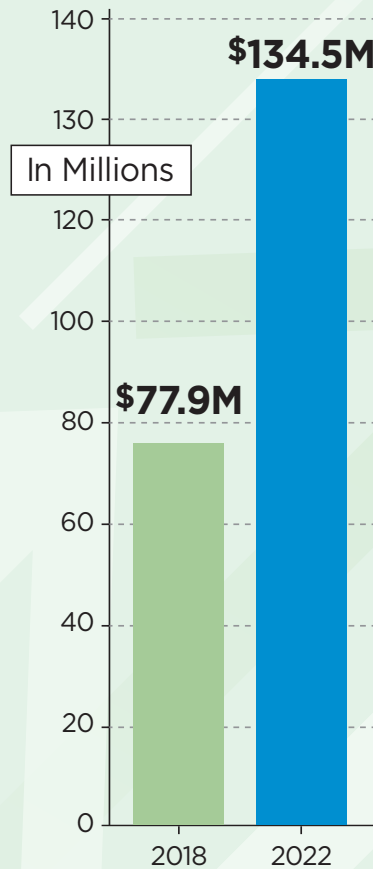
## In the last five years...

PCF's **Total Assets** have grown by **72.7%**

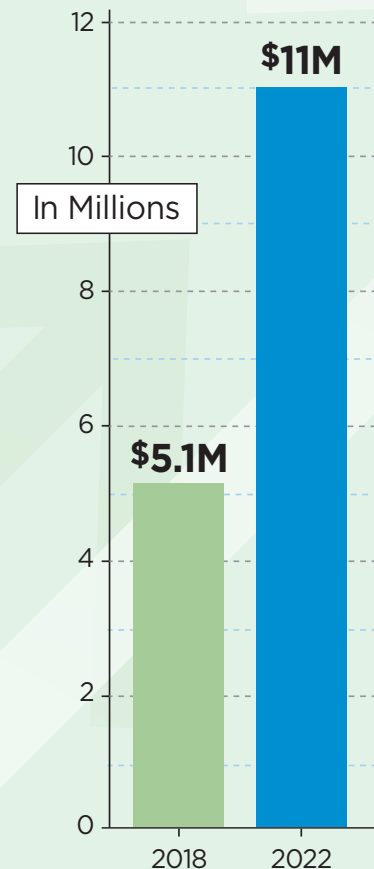
PCF's **Grantmaking** has grown by **115.7%**

PCF has been “here for good” since its inception in 1953, working together with our donors to grant a total of \$133 million. In 2022, despite a year of market upheaval, PCF and its donors continued to make a significant impact in grants and scholarships, disbursing a total of \$11 million to organizations in the Pasadena area and beyond.

### ASSET GROWTH



### GRANT GROWTH



## Growth of Grant Programs



*PCF Scholars launched in 2019 and has supported 37 students to date.*

**Since 2018, PCF grew its grantmaking programs from 7 to 12.**

The five new programs added include:

- PCF Scholars (2019)
- Affordable Housing Initiative (2019)
- COVID-19 Response Fund (2020)
- Animal Welfare Grant Program (2021)
- Petersen Scholars (2022)

**...And** PCF will debut the Arts & Culture Grant Program this year.

# Funds for Pasadena

## PCF'S SOURCE OF RENEWABLE ENERGY

PCF's competitive, application-based grant programs are focused specifically on assisting local nonprofit organizations within the greater Pasadena area. This local grantmaking is made possible with PCF's Funds for Pasadena – funds that are designated to benefit our community and continue to grow thanks to our donors and Endowment Builders.

### Since 2018, PCF's Funds for Pasadena...

have grown from  
**\$52.3** million  
in assets to  
**\$80.7** million

have disbursed  
**\$10.7** million  
in **scholarship  
awards and grants**



*High school clients of Stars take a college tour. Stars is a youth mentorship and educational program that has received several PCF Education Grants in recent years. It is one of many local nonprofits that benefit from PCF's Funds for Pasadena.*

### In 2022, the Funds for Pasadena...

enabled PCF to award **\$2.2 million**  
to Pasadena-area nonprofits.

#### EDUCATION & YOUTH

37% | \$821,085

#### COMMUNITY & ECONOMIC DEVELOPMENT

13% | \$298,452

#### ARTS & CULTURE

10% | \$235,949

#### HEALTH & SAFETY

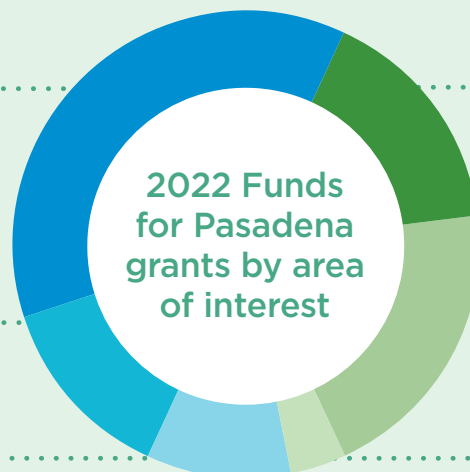
16% | \$361,773

#### HUMAN SERVICES

20% | \$439,311

#### ANIMAL WELFARE & ENVIRONMENT

4% | \$80,065



If you'd like to support the good works of PCF, scan the QR Code or visit [pasadenacf.org/donate](http://pasadenacf.org/donate) to give online.



## GRANTS IN ACTION

### LOCAL NEED RISES WITH INFLATION PCF STEPS IN WITH EMERGENCY FUNDS

In December, PCF announced a round of emergency funding to address unprecedented local need. Pasadena-area residents have endured 40-year-high inflation rates, and the twin crises of food and housing insecurity has led to dramatic increases in families requesting assistance from local nonprofit organizations. Friends in Deed, PACTL, NDLON, and Union Station received a combined total of \$110,000 in PCF emergency grants to assist with food pantry supplies and other social services.



Volunteers at the Friends in Deed food pantry.

"This grant is extremely important to us as the number of clients coming to our food pantry has increased substantially to an average of 500 households a week. To continue to provide healthy food to those in need, we need more resources. This grant will be a huge boost in our ability to reach these goals."

— Friends in Deed Executive Director Rabbi Joshua Levine Grater



Seniors wait for NDLON's Mano a Mano monthly food distribution to open.